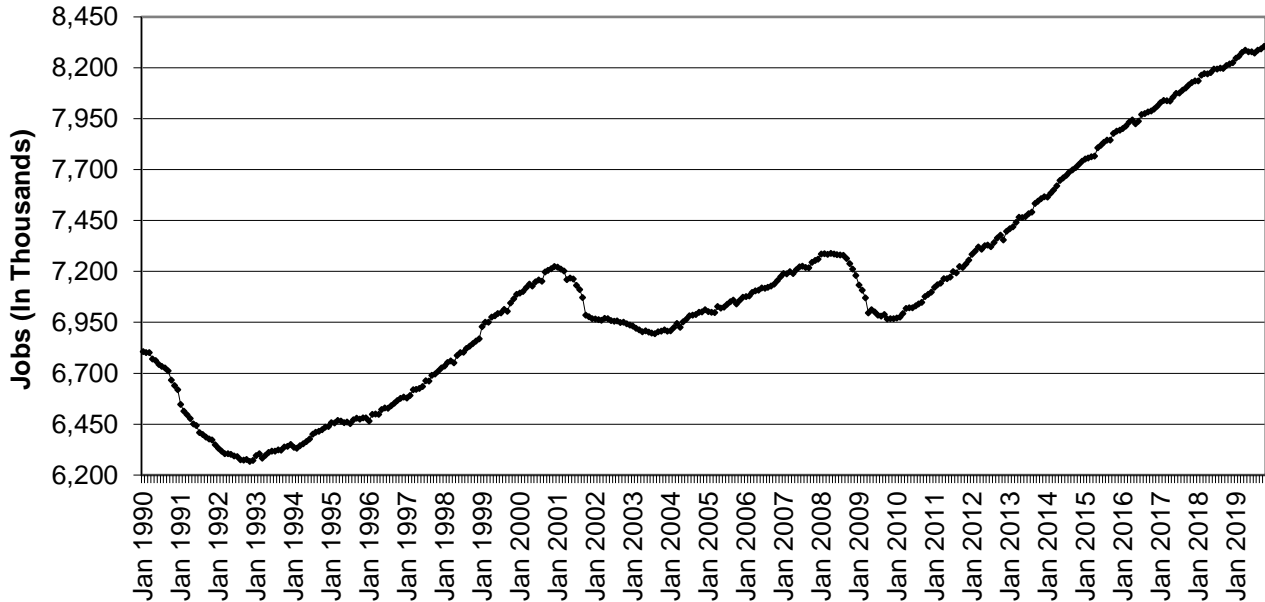


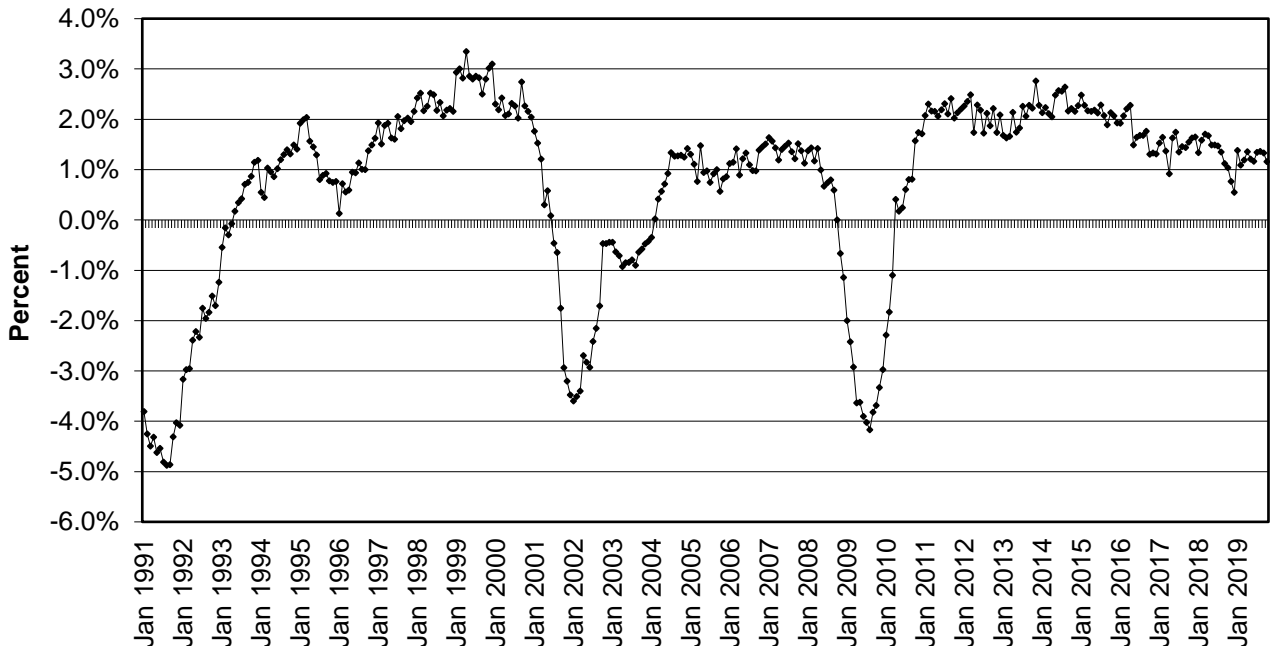
### CHART 1: PRIVATE SECTOR JOB COUNT

(Seasonally Adjusted)  
NEW YORK STATE  
JANUARY 1990 - OCTOBER 2019



### CHART 2: OVER-THE-YEAR PERCENT CHANGE IN PRIVATE SECTOR JOBS

(Not Seasonally Adjusted)  
NEW YORK STATE  
JANUARY 1991 - OCTOBER 2019



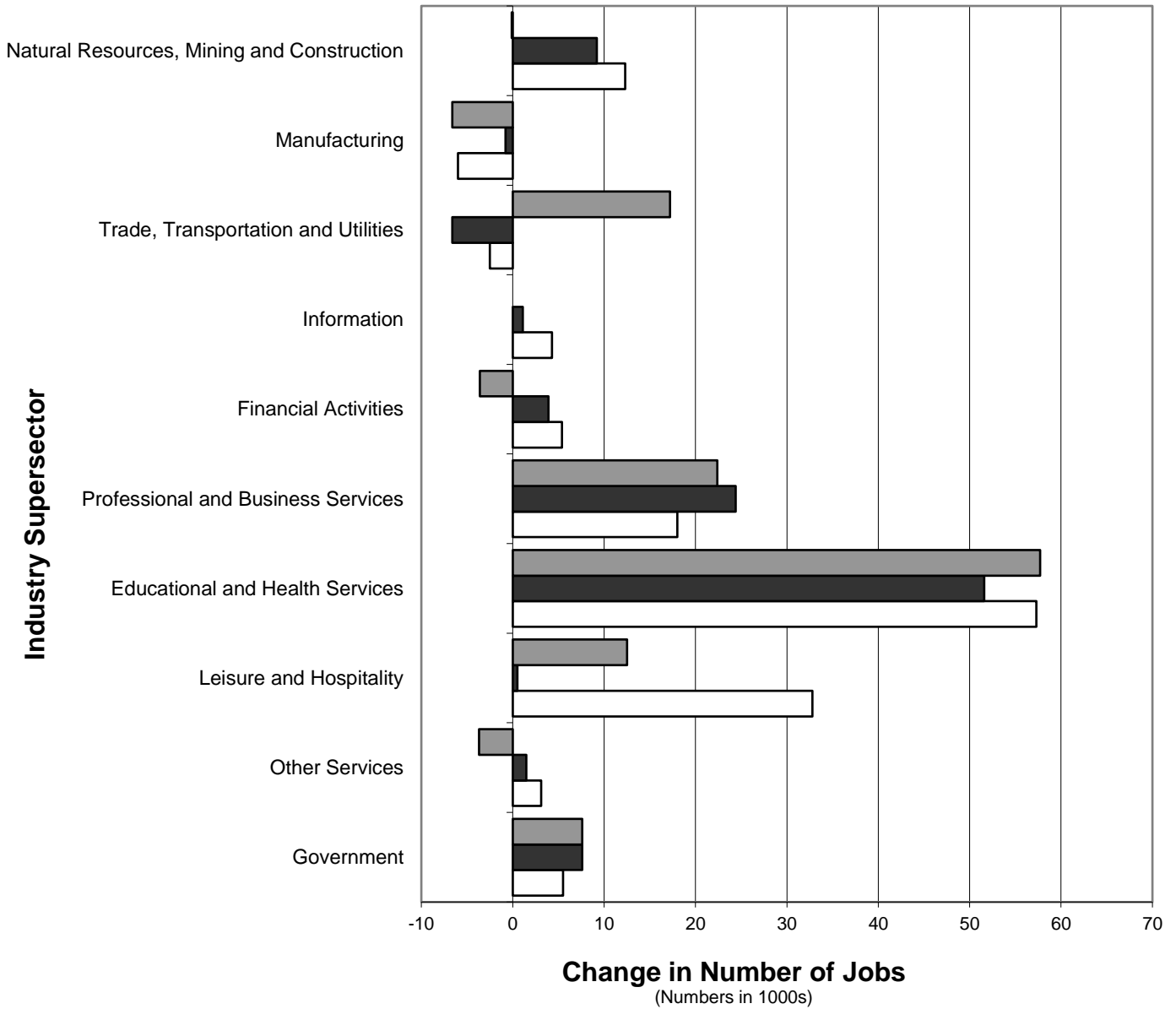
Note: The current private sector jobs series begins in January 1990; thus, over-the-year changes in the series start in January 1991.

**CHART 3: OVER-THE-YEAR CHANGE IN NONFARM JOBS BY SUPERSECTOR**

NEW YORK STATE

(Not Seasonally Adjusted)

OCTOBER 2016-OCTOBER 2017, OCTOBER 2017-OCTOBER 2018, OCTOBER 2018-OCTOBER 2019

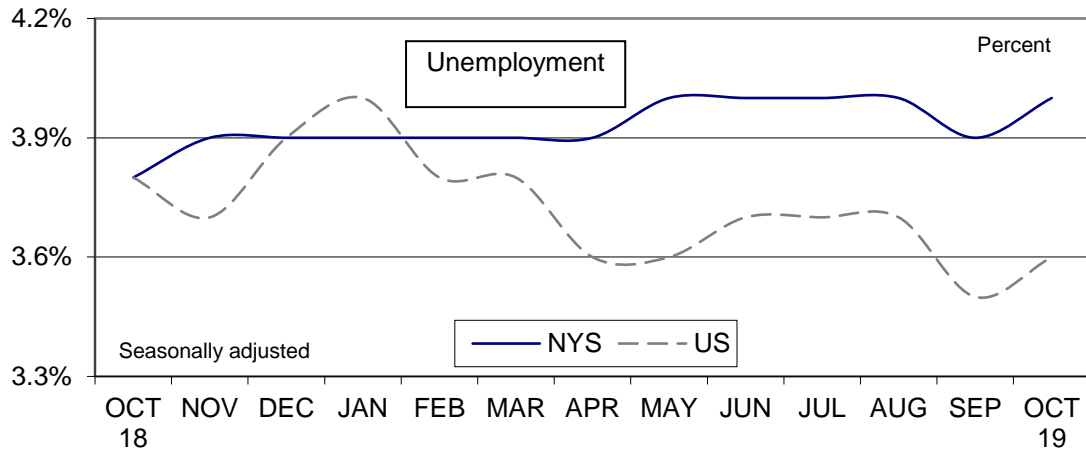


■ OCT 2018-OCT 2019    ■ OCT 2017-OCT 2018    □ OCT 2016-OCT 2017

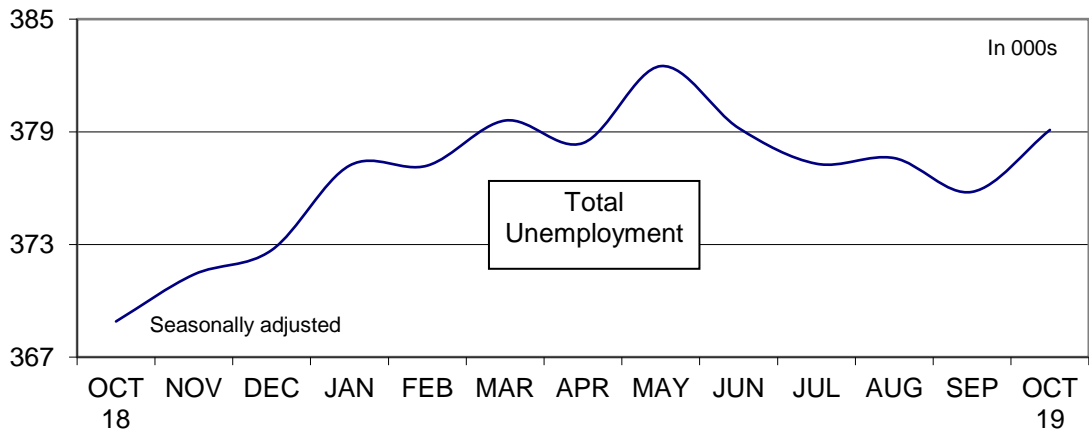
## CHART 4: LABOR FORCE STATISTICS IN OCTOBER 2019

In October...

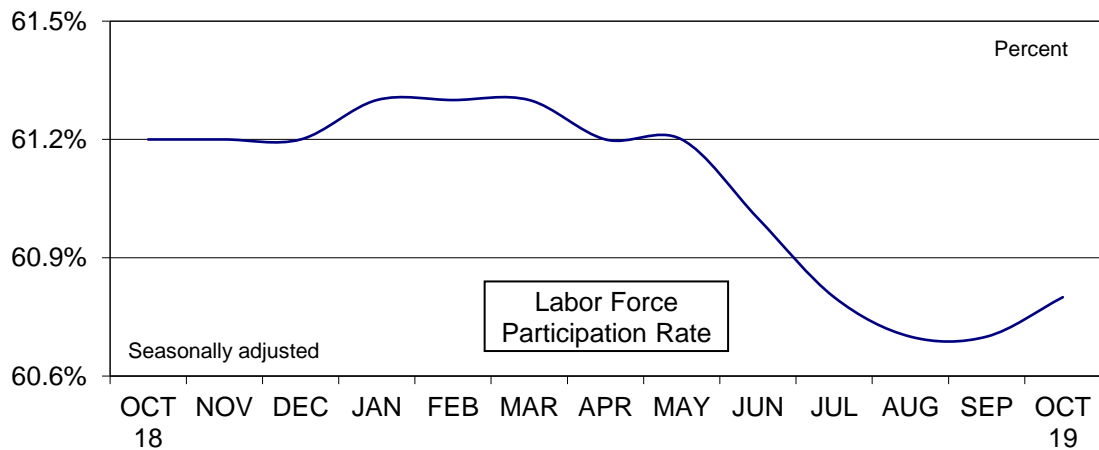
...NYS unemployment rate increased



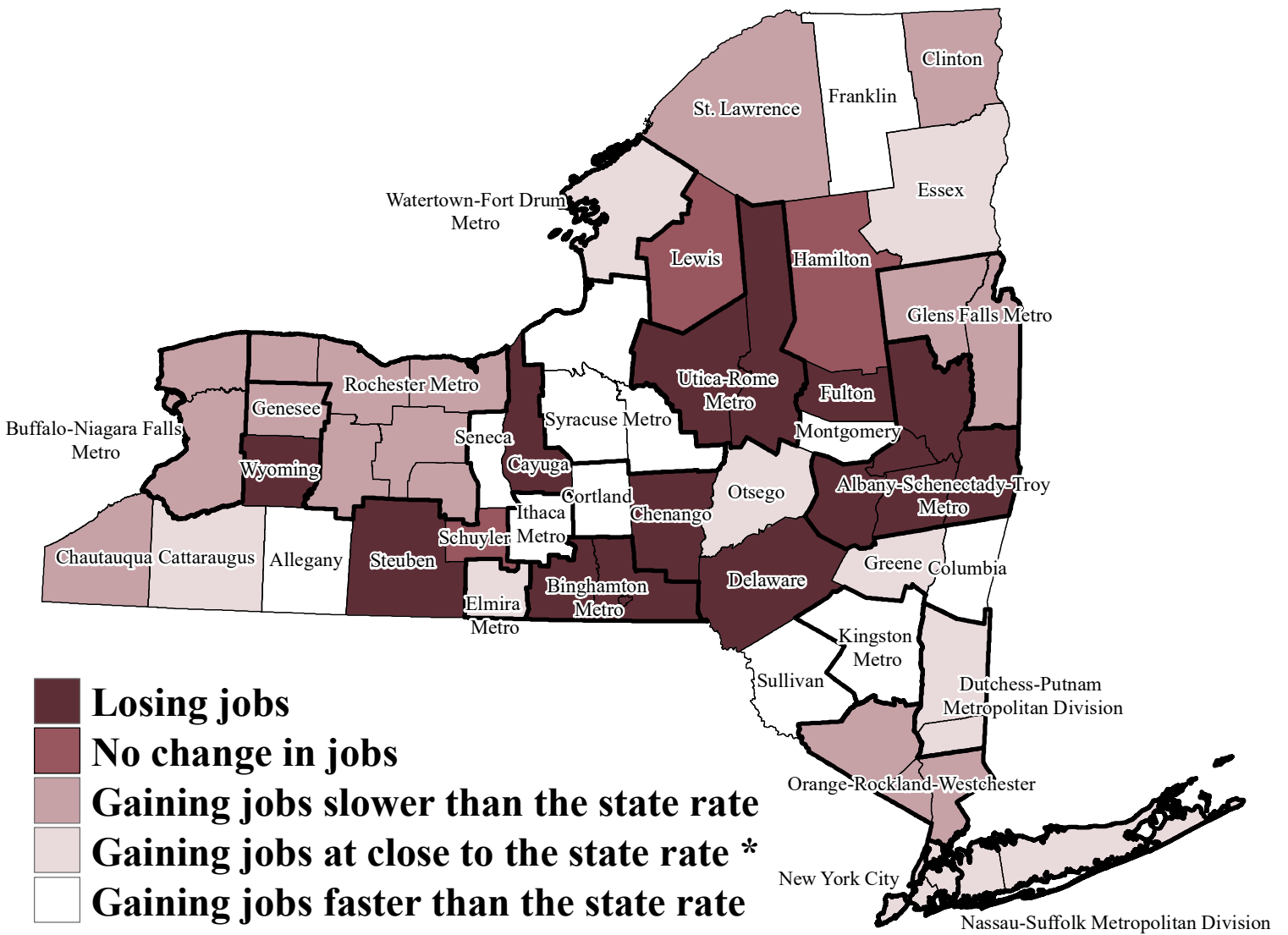
...NYS total unemployment increased



...NYS labor force participation rate increased



# Percent Change in Private Sector Jobs by Area, New York State, October 2018 - October 2019



\* Represents job gain of between 1.0% and 1.4% from October 2018 to October 2019.