

Labor Market Overview

Glens Falls MSA

October 2017



prepared by:

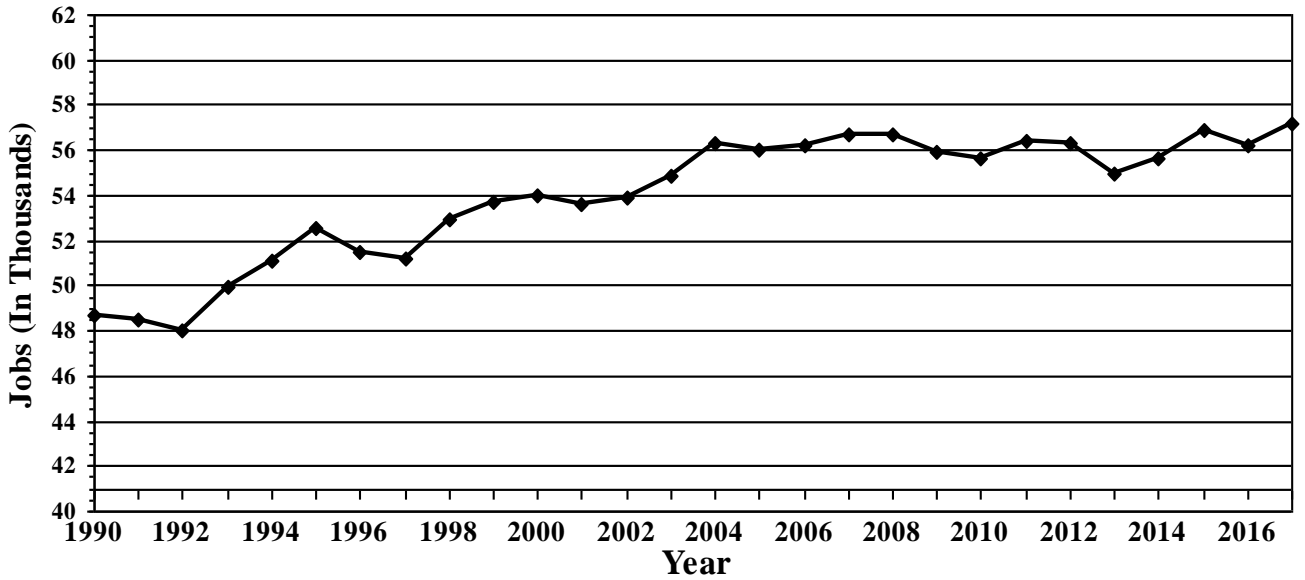
James H. Ross

Labor Market Analyst

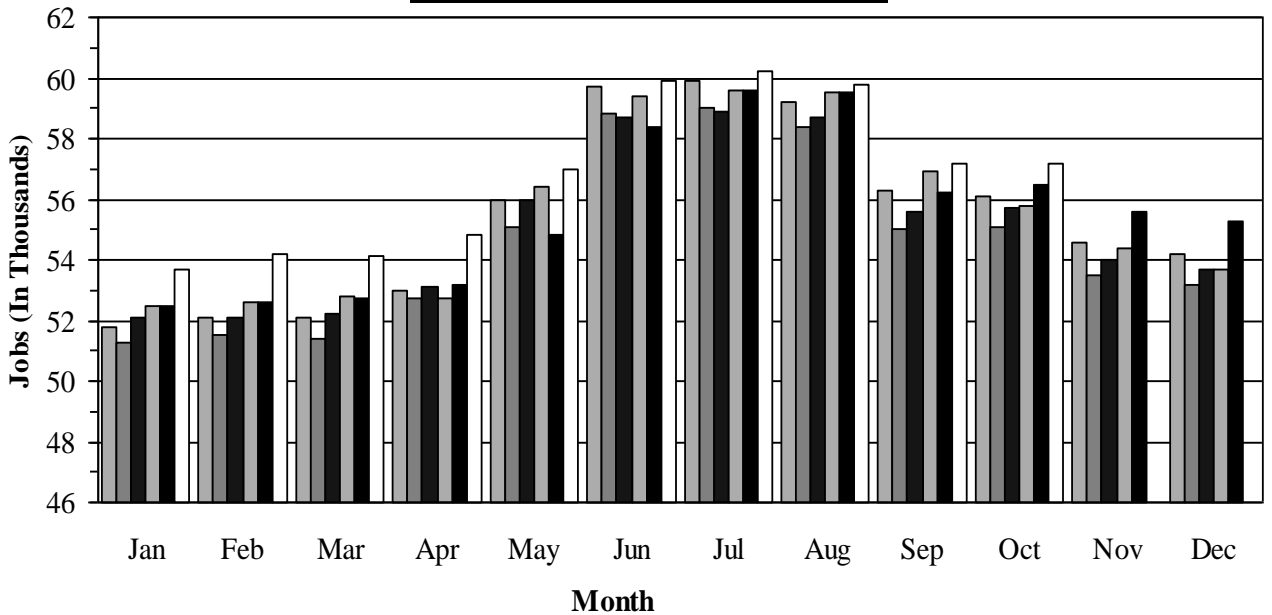
Available online at www.labor.state.ny.us/stats/cap/glensfalls.pdf



NONAGRICULTURAL WAGE AND SALARY JOBS
GLENS FALLS MSA
 October 1990 - October 2017

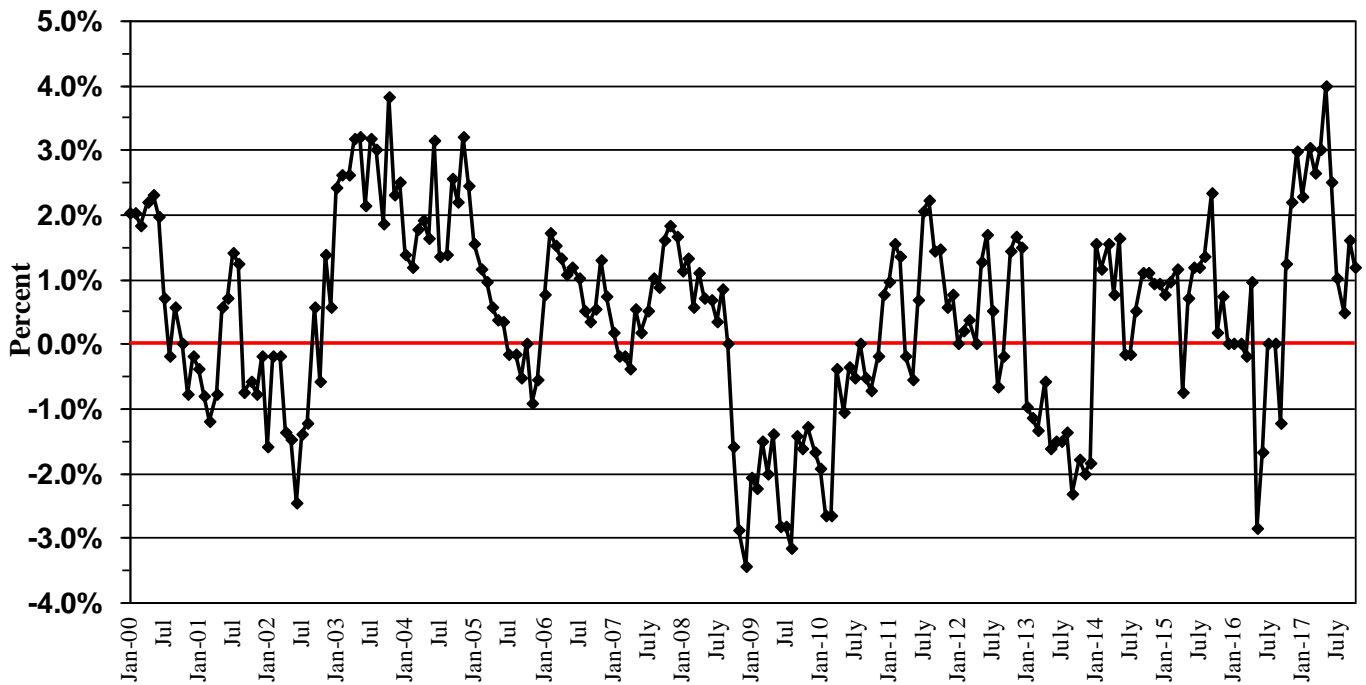


MONTHLY JOB COUNTS
 GLENS FALLS MSA, 2012-2017



2012
 2013
 2014
 2015
 2016
 2017

RATE OF GROWTH IN JOBS
GLENS FALLS MSA, January 2000 - October 2017

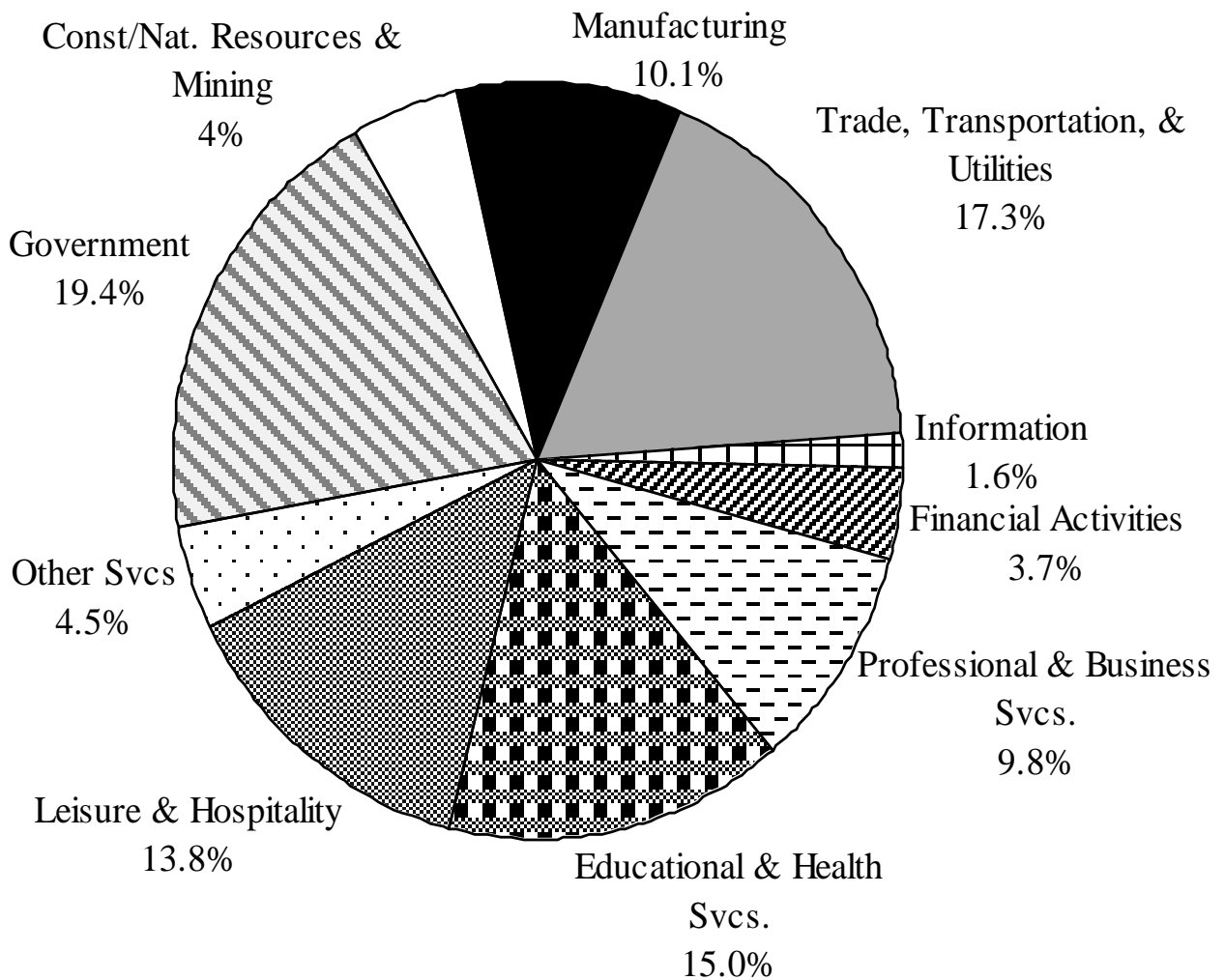


Note: Based on year-to-year change

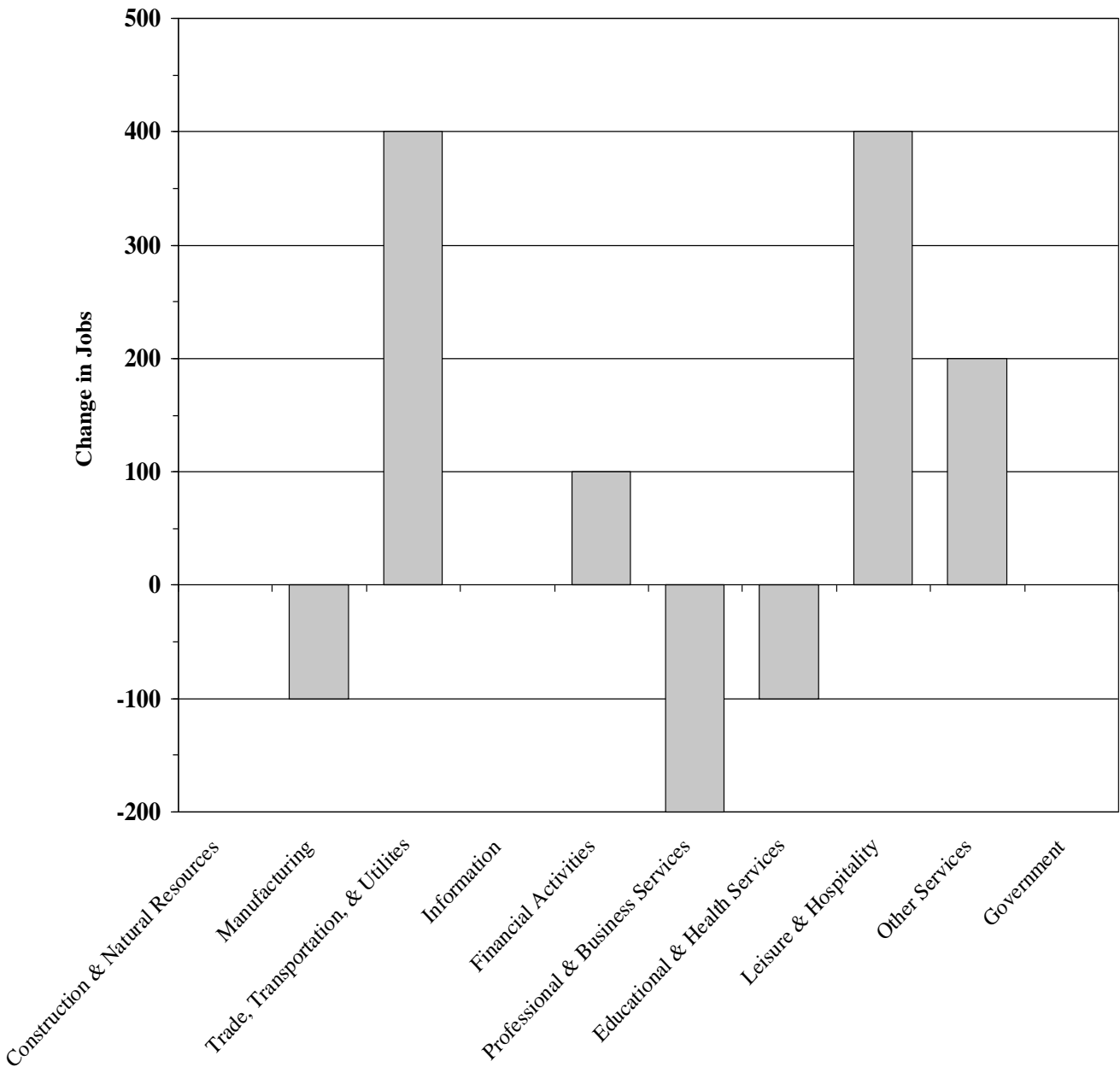
NONAGRICULTURAL EMPLOYMENT BY SUPER-SECTOR

GLENS FALLS MSA, October 2017

Industry Super-sector



CHANGE IN JOB COUNTS BY SUPER-SECTOR
GLENS FALLS MSA, October 2016 - October 2017



**Number of Nonfarm Jobs by Place of Work
New York State and Areas
(In Thousands, Not Seasonally Adjusted)**

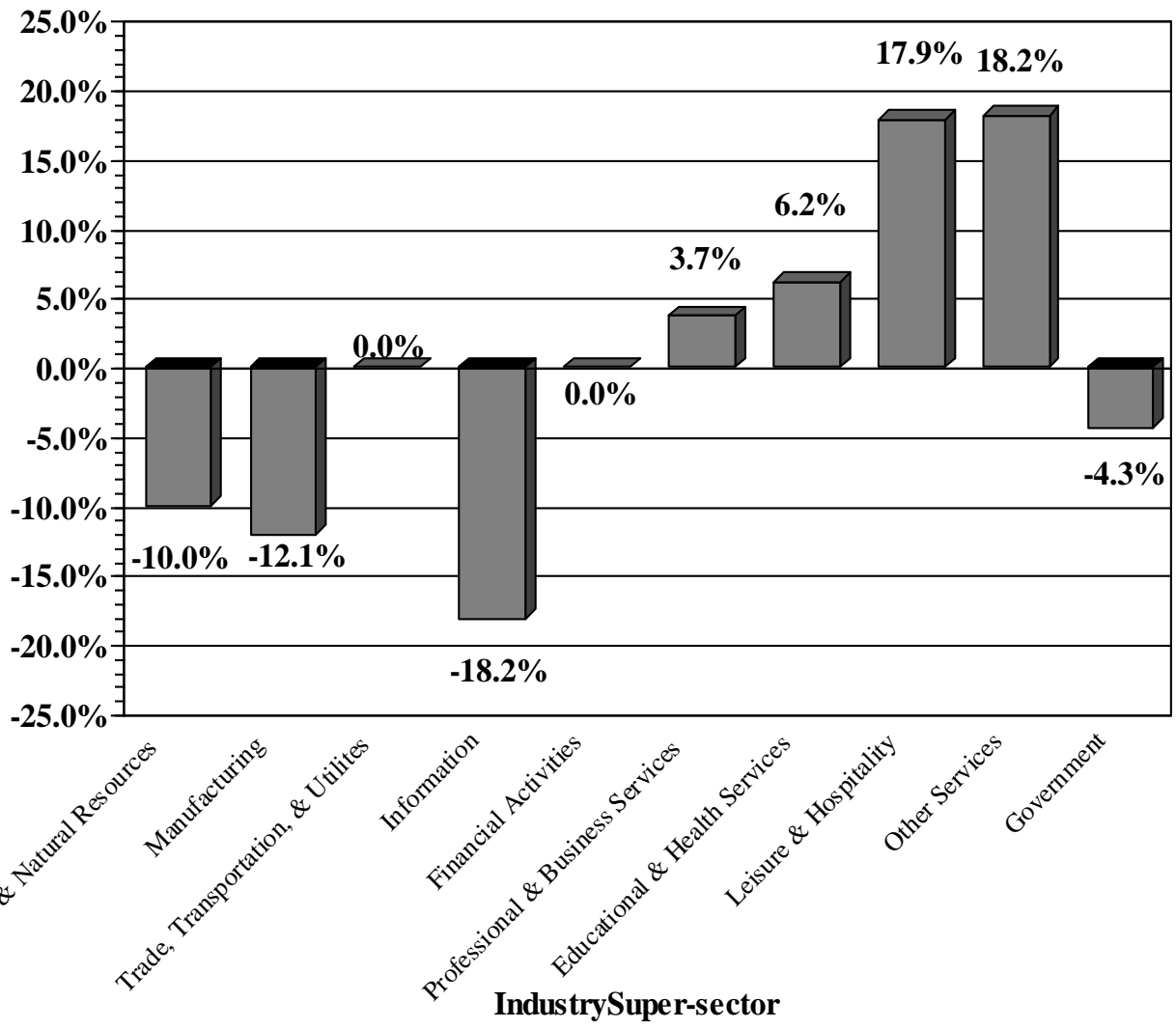
Area	October 2017	October 2016 (R)	Change to October 2017 from:	
			October 2016	
			Net	%
New York State	9,615.5	9,512.7	102.8	1.1%
Metropolitan Areas				
Albany-Schenectady-Troy Metro Area	472.5	470.5	2.0	0.4%
Binghamton Metro Area	105.9	105.6	0.3	0.3%
Buffalo-Niagara Falls Metro Area	569.4	572.1	-2.7	-0.5%
Dutchess-Putnam Metropolitan Division	149.0	148.1	0.9	0.6%
Elmira Metro Area	36.9	37.6	-0.7	-1.9%
Glens Falls Metro Area	57.2	56.5	0.7	1.2%
Ithaca Metro Area	67.8	66.0	1.8	2.7%
Kingston Metro Area	63.6	63.0	0.6	1.0%
Nassau-Suffolk Metropolitan Division	1,351.0	1,346.8	4.2	0.3%
New York City	4,454.8	4,387.3	67.5	1.5%
Orange-Rockland-Westchester Metropolitan Division	724.4	716.2	8.2	1.1%
Rochester Metro Area	535.6	539.1	-3.5	-0.6%
Syracuse Metro Area	323.6	321.3	2.3	0.7%
Utica-Rome Metro Area	129.2	128.2	1.0	0.8%
Watertown-Fort Drum Metro Area	43.2	42.8	0.4	0.9%
Counties Outside Metropolitan Areas				
Allegany	16.0	16.1	-0.1	-0.6%
Cattaraugus	31.8	31.8	0.0	0.0%
Cayuga	25.5	26.0	-0.5	-1.9%
Chautauqua	51.5	51.8	-0.3	-0.6%
Chenango	18.4	18.4	0.0	0.0%
Clinton	34.7	34.5	0.2	0.6%
Columbia	22.2	22.1	0.1	0.5%
Cortland	19.5	19.5	0.0	0.0%
Delaware	15.5	15.5	0.0	0.0%
Essex	14.8	14.8	0.0	0.0%
Franklin	19.2	19.0	0.2	1.1%
Fulton	17.6	17.8	-0.2	-1.1%
Genesee	23.2	23.2	0.0	0.0%
Greene	15.3	14.9	0.4	2.7%
Hamilton	2.2	2.2	0.0	0.0%
Lewis	6.4	6.5	-0.1	-1.5%
Montgomery	20.5	20.2	0.3	1.5%
Otsego	25.7	25.8	-0.1	-0.4%
St. Lawrence	39.3	39.4	-0.1	-0.3%
Schuyler	5.2	5.2	0.0	0.0%
Seneca	13.2	11.7	1.5	12.8%
Steuben	38.5	38.7	-0.2	-0.5%
Sullivan	27.5	26.8	0.7	2.6%
Wyoming	13.3	13.3	0.0	0.0%

**EMPLOYMENT IN NONAGRICULTURAL ESTABLISHMENTS, BY PLACE OF WORK
GLENS FALLS AREA**

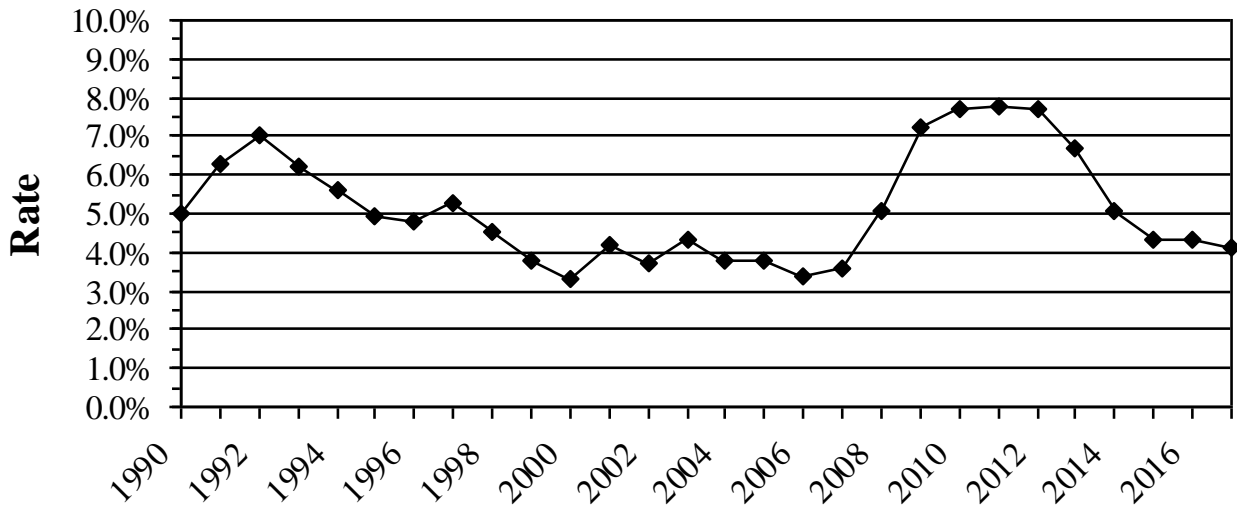
(In thousands, not seasonally adjusted)

Industry	Oct 2017	Sept 2017	Oct 2016	Net Month	Pct Month	Net Year	Pct Year
Total Nonfarm	57.2	57.2	56.5	0.0	0.0%	0.7	1.2%
Total Private	46.1	46.9	45.4	-0.8	-1.7%	0.7	1.5%
Goods Producing	8.5	8.5	8.6	0.0	0.0%	-0.1	-1.2%
Natural Resources, Mining and Construction	2.7	2.7	2.7	0.0	0.0%	0.0	0.0%
Manufacturing	5.8	5.8	5.9	0.0	0.0%	-0.1	-1.7%
Service Providing	48.7	48.7	47.9	0.0	0.0%	0.8	1.7%
Private Service Providing	37.6	38.4	36.8	-0.8	-2.1%	0.8	2.2%
Trade, Transportation, and Utilities	9.9	9.9	9.5	0.0	0.0%	0.4	4.2%
Wholesale Trade	1.2	1.2	1.2	0.0	0.0%	0.0	0.0%
Retail Trade	7.9	7.8	7.4	0.1	1.3%	0.5	6.8%
Transportation, Warehousing, and Utilities	0.8	0.9	0.9	-0.1	-11.1%	-0.1	-11.1%
Information	0.9	0.9	0.9	0.0	0.0%	0.0	0.0%
Financial Activities	2.1	2.1	2.0	0.0	0.0%	0.1	5.0%
Professional and Business Services	5.6	5.6	5.8	0.0	0.0%	-0.2	-3.4%
Education and Health Services	8.6	8.6	8.7	0.0	0.0%	-0.1	-1.1%
Health Care and Social Assistance	8.6	8.5	8.4	0.1	1.2%	0.2	2.4%
Leisure and Hospitality	7.9	8.7	7.5	-0.8	-9.2%	0.4	5.3%
Other Services	2.6	2.6	2.4	0.0	0.0%	0.2	8.3%
Government	11.1	10.3	11.1	0.8	7.8%	0.0	0.0%
Local Government	8.7	8.0	8.7	0.7	8.8%	0.0	0.0%
Local Government Education	5.6	4.7	5.6	0.9	19.1%	0.0	0.0%

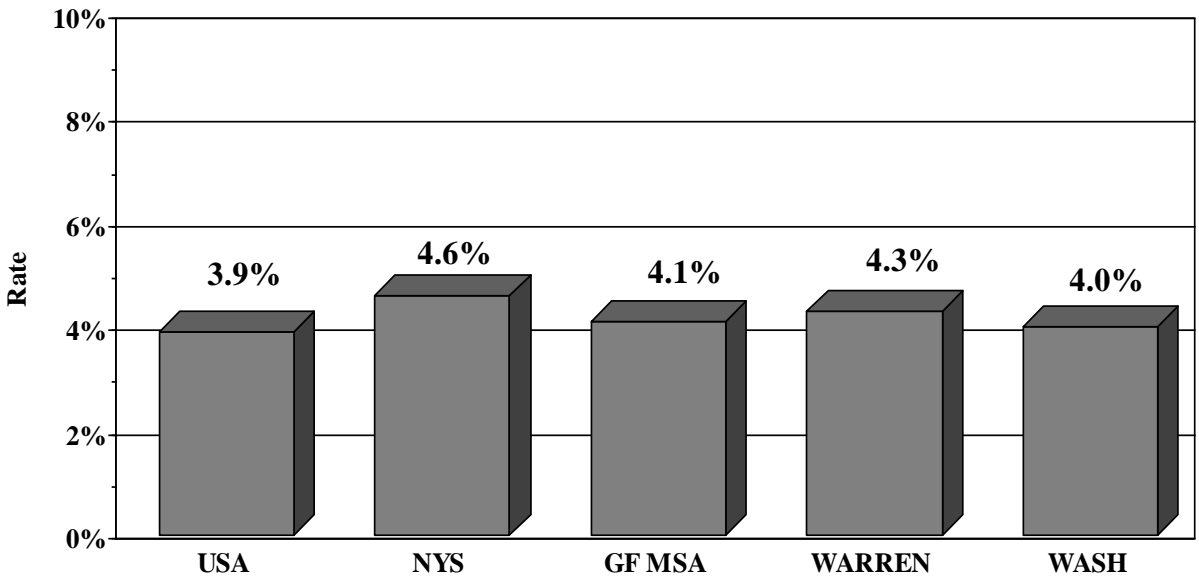
PERCENT CHANGE IN WAGE AND SALARY JOBS BY SUPER-SECTOR
 GLENS FALLS MSA, October 2007 - October 2017



RESIDENT CIVILIAN UNEMPLOYMENT RATE
Glens Falls MSA
September 1990 – October 2017



RESIDENT CIVILIAN UNEMPLOYMENT RATE - OCTOBER 2017
United States, New York State and Glens Falls MSA



**Employed, Unemployed, and Rate of Unemployment
By Place of Residence
For New York State and Major Labor Areas, October 2017**
(Numbers in thousands, not seasonally adjusted)

AREA/COUNTY	EMPLOYED			UNEMPLOYED			UNEMPLOYMENT RATE (%)		
	Oct. 2017	Oct. 2016	Net Change	Oct. 2017	Oct. 2016	Net Change	Oct. 2017	Oct. 2016	Net Change
United States	154,223	152,335	+1,888	6,242	7,447	-1,205	3.9	4.7	-0.8
New York State	9,262.9	9,092.9	+170.0	449.2	455.1	-5.9	4.6	4.8	-0.2
Albany-Schenectady-Troy	431.9	427.8	+4.1	18.0	17.5	+0.5	4.0	3.9	+0.1
Albany	153.2	151.7	+1.5	6.4	6.2	+0.3	4.0	3.9	+0.1
Rensselaer	78.6	77.9	+0.7	3.3	3.2	+0.1	4.1	4.0	+0.1
Saratoga	113.2	112.1	+1.0	4.3	4.3	+0.0	3.7	3.7	0.0
Schenectady	73.0	72.2	+0.7	3.3	3.2	+0.1	4.3	4.2	+0.1
Schoharie	14.0	13.9	+0.1	0.7	0.7	-0.0	4.5	4.6	-0.1
Binghamton	103.7	103.0	+0.7	5.2	5.4	-0.2	4.8	5.0	-0.2
Broome	81.6	81.1	+0.6	4.2	4.3	-0.1	4.9	5.1	-0.2
Tioga	22.1	22.0	+0.1	1.0	1.1	-0.1	4.4	4.7	-0.3
Buffalo-Niagara Falls	520.6	519.8	+0.8	26.3	26.6	-0.3	4.8	4.9	-0.1
Erie	425.5	424.8	+0.7	21.0	21.1	-0.1	4.7	4.7	0.0
Niagara	95.1	95.0	+0.1	5.3	5.4	-0.2	5.3	5.4	-0.1
Dutchess-Putnam	187.3	184.9	+2.5	8.1	7.8	+0.3	4.1	4.0	+0.1
Dutchess	138.4	136.6	+1.8	6.0	5.8	+0.2	4.1	4.1	0.0
Putnam	49.0	48.3	+0.7	2.1	2.0	+0.1	4.1	4.0	+0.1
Elmira (Chemung)	33.7	34.0	-0.3	1.8	1.9	-0.1	5.1	5.4	-0.3
Glens Falls	58.1	57.2	+0.9	2.5	2.6	-0.1	4.1	4.3	-0.2
Warren	30.7	30.2	+0.5	1.4	1.4	-0.1	4.3	4.5	-0.2
Washington	27.4	27.1	+0.4	1.1	1.2	-0.0	4.0	4.1	-0.1
Ithaca (Tompkins)	50.2	48.8	+1.4	2.1	2.0	+0.1	4.0	3.9	+0.1
Kingston (Ulster)	85.6	84.5	+1.1	3.8	3.7	+0.1	4.2	4.2	0.0
Nassau-Suffolk	1,423.0	1,407.5	+15.5	61.2	59.7	+1.5	4.1	4.1	0.0
Nassau	675.2	667.8	+7.3	28.3	27.3	+1.0	4.0	3.9	+0.1
Suffolk	747.8	739.6	+8.2	32.9	32.3	+0.5	4.2	4.2	0.0
New York City	4,043.2	3,921.2	+122.1	208.3	217.2	-8.9	4.9	5.2	-0.3
Bronx	583.7	565.9	+17.8	41.3	43.8	-2.5	6.6	7.2	-0.6
Kings	1,192.9	1,157.1	+35.9	63.0	65.7	-2.7	5.0	5.4	-0.4
New York	903.2	876.2	+27.0	41.4	42.7	-1.3	4.4	4.6	-0.2
Queens	1,147.3	1,112.7	+34.6	51.4	53.5	-2.0	4.3	4.6	-0.3
Richmond	216.1	209.3	+6.8	11.2	11.6	-0.4	4.9	5.3	-0.4
Orange-Rockland-Westchester	782.2	769.5	+12.7	35.6	34.4	+1.2	4.4	4.3	+0.1
Orange	172.4	169.5	+2.9	7.9	7.7	+0.2	4.4	4.3	+0.1
Rockland	147.3	144.9	+2.4	6.6	6.3	+0.3	4.3	4.2	+0.1
Westchester	462.6	455.2	+7.4	21.1	20.4	+0.7	4.4	4.3	+0.1
Rochester	495.1	495.5	-0.5	24.0	23.6	+0.4	4.6	4.5	+0.1
Livingston	29.4	29.5	-0.1	1.4	1.4	-0.0	4.5	4.5	0.0
Monroe	344.1	344.2	-0.1	17.1	16.7	+0.4	4.7	4.6	+0.1
Ontario	52.1	52.1	-0.1	2.2	2.1	+0.1	4.1	3.9	+0.2
Orleans	16.7	16.7	-0.0	0.9	0.9	+0.0	5.2	5.1	+0.1
Wayne	41.7	41.8	-0.1	1.9	2.0	-0.1	4.4	4.5	-0.1
Yates	11.1	11.2	-0.1	0.4	0.5	-0.0	3.8	4.0	-0.2
Syracuse	294.9	291.4	+3.5	14.3	14.2	+0.1	4.6	4.6	0.0
Madison	31.3	31.0	+0.3	1.5	1.5	+0.0	4.7	4.6	+0.1
Onondaga	213.1	210.5	+2.6	9.8	9.6	+0.2	4.4	4.3	+0.1
Oswego	50.5	49.9	+0.6	3.0	3.1	-0.1	5.6	5.8	-0.2
Utica-Rome	123.9	122.4	+1.4	6.1	5.9	+0.2	4.7	4.6	+0.1
Herkimer	26.8	26.5	+0.3	1.4	1.3	+0.1	4.9	4.7	+0.2
Oneida	97.1	96.0	+1.1	4.7	4.5	+0.1	4.6	4.5	+0.1
Watertown-Fort Drum (Jefferson)	43.1	42.5	+0.6	2.5	2.6	-0.1	5.4	5.7	-0.3

**Employed, Unemployed, and Rate of Unemployment
By Place of Residence
For Counties Not Within Major Labor Areas, October 2017**
(Numbers in thousands, not seasonally adjusted)

AREA/COUNTY	EMPLOYED			UNEMPLOYED			UNEMPLOYMENT RATE (%)		
	Oct. 2017	Oct. 2016	Net Change	Oct. 2017	Oct. 2016	Net Change	Oct. 2017	Oct. 2016	Net Change
Allegany	19.1	19.1	+0.0	1.1	1.1	+0.0	5.5	5.4	+0.1
Cattaraugus	32.9	32.8	+0.1	1.8	1.9	-0.1	5.2	5.5	-0.3
Cayuga	34.3	34.5	-0.2	1.6	1.7	-0.1	4.3	4.6	-0.3
Chautauqua	52.1	52.2	-0.1	2.9	3.1	-0.2	5.3	5.7	-0.4
Chenango	21.5	21.5	+0.0	1.1	1.1	-0.0	4.7	4.7	0.0
Clinton	34.0	33.7	+0.3	1.6	1.7	-0.1	4.6	4.9	-0.3
Columbia	30.5	30.2	+0.3	1.1	1.1	-0.0	3.4	3.5	-0.1
Cortland	21.9	21.7	+0.2	1.1	1.1	-0.0	4.7	4.9	-0.2
Delaware	18.1	18.2	-0.0	0.9	0.9	-0.0	4.8	4.8	0.0
Essex	16.2	16.1	+0.0	0.7	0.7	-0.0	4.4	4.4	0.0
Franklin	18.8	18.6	+0.2	1.0	1.0	+0.0	5.2	5.2	0.0
Fulton	21.9	21.9	+0.0	1.2	1.2	+0.0	5.2	5.2	0.0
Genesee	28.4	28.4	+0.0	1.3	1.3	+0.0	4.3	4.3	0.0
Greene	19.8	19.4	+0.5	1.0	0.9	+0.0	4.6	4.5	+0.1
Hamilton	2.2	2.2	-0.0	0.1	0.1	+0.0	5.0	4.3	+0.7
Lewis	10.8	10.9	-0.0	0.6	0.7	-0.1	5.2	5.7	-0.5
Montgomery	21.6	21.4	+0.3	1.1	1.1	+0.0	5.0	4.9	+0.1
Otsego	26.7	26.7	-0.0	1.2	1.2	-0.0	4.3	4.3	0.0
St. Lawrence	40.9	40.8	+0.0	2.5	2.5	0.0	5.7	5.7	0.0
Schuyler	8.0	7.9	+0.1	0.4	0.4	-0.0	4.6	4.9	-0.3
Seneca	15.7	14.6	+1.1	0.6	0.7	-0.0	3.9	4.4	-0.5
Steuben	40.5	40.6	-0.1	2.3	2.3	-0.0	5.3	5.3	0.0
Sullivan	33.2	32.3	+0.8	1.6	1.6	+0.0	4.5	4.6	-0.1
Wyoming	17.1	17.2	-0.0	0.8	0.8	-0.0	4.4	4.6	-0.2

FACT SHEET

This fact sheet conveys important technical information that will contribute to a better understanding of resident labor force, including unemployment rates, and job data included in this and future press releases.

State unemployment rates based on regression model

Unemployment rates for New York State and all other states (as well as New York City and the City of Los Angeles) are estimated using time-series regression models developed by the U.S. Bureau of Labor Statistics. The model reduces month-to-month variation in labor force data by reducing variation caused by sampling errors and other statistical noise (irregularities).

Benchmarking of estimates

At the end of each year, labor force data are revised to reflect updated input data including new Census population controls, revised establishment jobs data, and revised state-level data from the Current Population Survey (CPS). As part of this procedure, all state figures are reviewed, revised as necessary, and then re-estimated. This process is commonly referred to as "benchmarking."

Changes in methodology

With the release of January 2005 data, a new time-series regression model that utilizes "real-time" benchmarking is in effect. The redesigned model should reduce end-of-year revisions as major economic events will be reflected in a more timely manner. The new model also changes how estimates of new entrants or re-entrants into the labor force are made for sub-state areas, which may result in higher or lower unemployment rates in some sub-state areas. Also effective with the release of January 2005 data are updated metro area definitions. Please see <http://www.labor.state.ny.us/pdf/enys1104.pdf> for additional details.

Unemployed and UI Beneficiaries

The estimate of the number of unemployed includes all persons who had no employment during the reference week (the week including the 12th of the month), were available for work, except for temporary illness, and had made specific efforts to find employment sometime during the 4-week period ending with the reference week. Unemployment insurance (UI) beneficiaries include those who apply for and qualify for UI benefits. Consequently, the estimate of the number of unemployed and the number of UI beneficiaries do not necessarily move in tandem. Persons collecting UI benefits generally make up from 35 to 50 percent of the unemployed.

Job data

Monthly job data are obtained from the Current Employment Statistics survey of business establishments, which samples 18,000 establishments in New York State. The survey excludes self-employed workers, agricultural workers, unpaid family workers and domestic workers employed by private households. The data represent a count of jobs by place of work. Estimates for each month are revised the following month, as well as at the end of each year, as more complete data become available.

Press release availability

In an effort to distribute information faster and more reliably and to reduce shipping costs, the New York State Department of Labor's monthly press release is available exclusively online at: <http://www.labor.state.ny.us>.