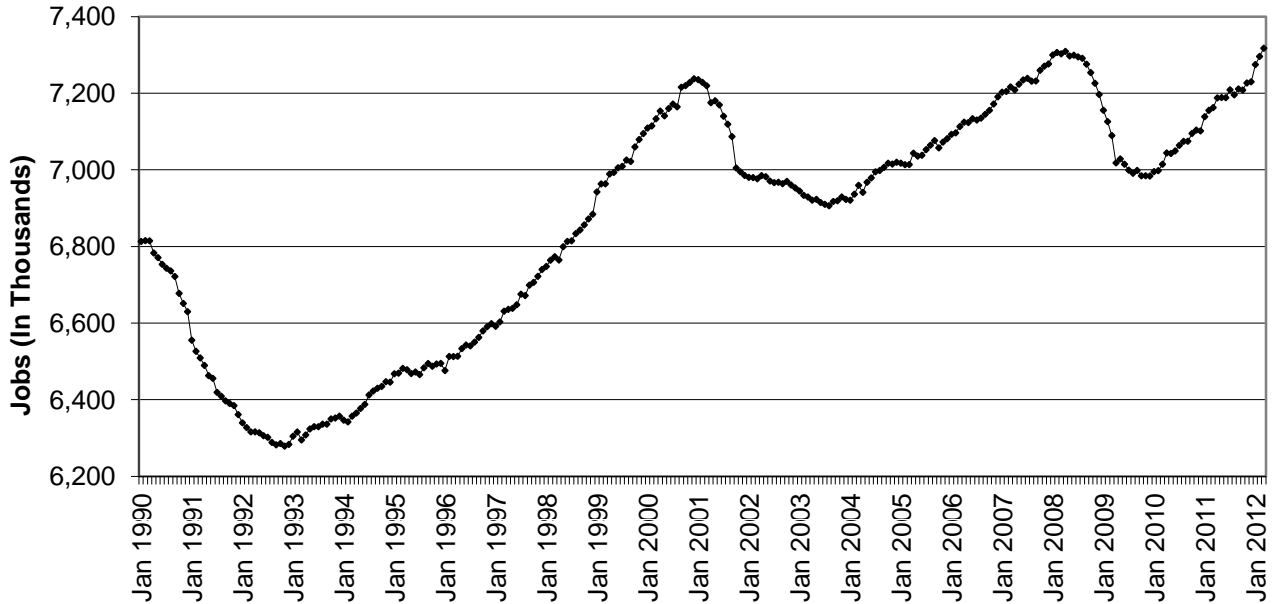


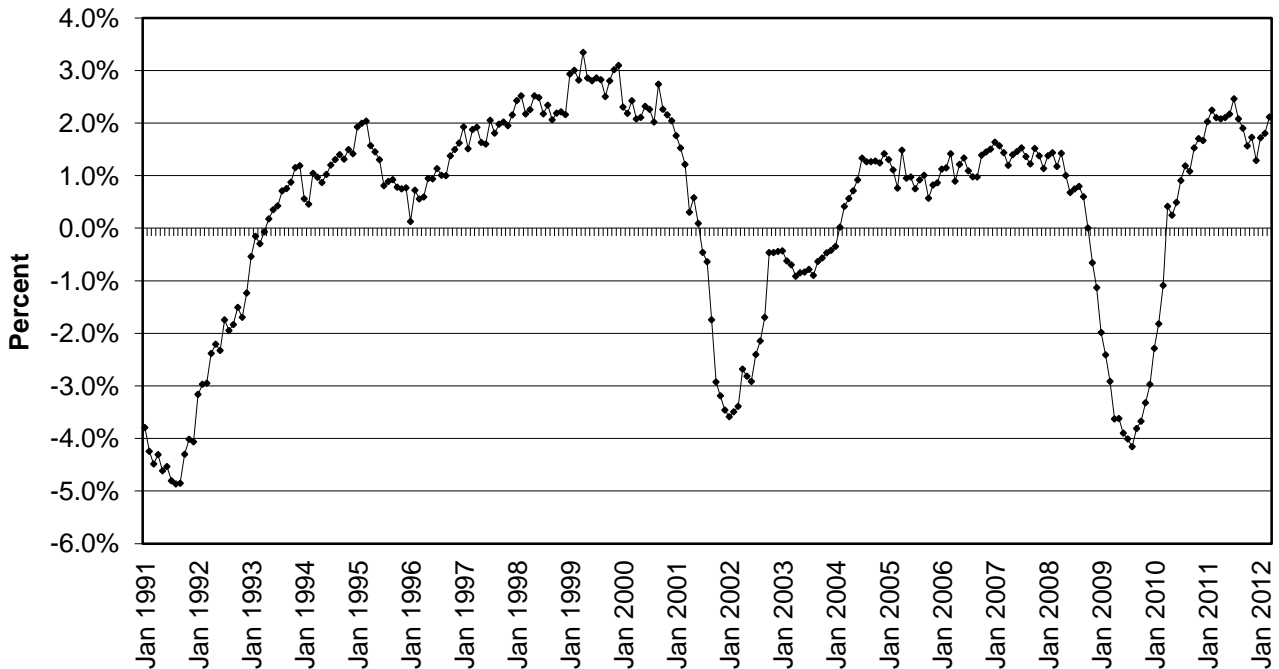
### CHART 1: PRIVATE SECTOR JOB COUNT

(Seasonally Adjusted)  
NEW YORK STATE  
JANUARY 1990 - MARCH 2012



### CHART 2: OVER-THE-YEAR CHANGE IN PRIVATE SECTOR JOBS

(Not Seasonally Adjusted)  
NEW YORK STATE  
JANUARY 1991 - MARCH 2012



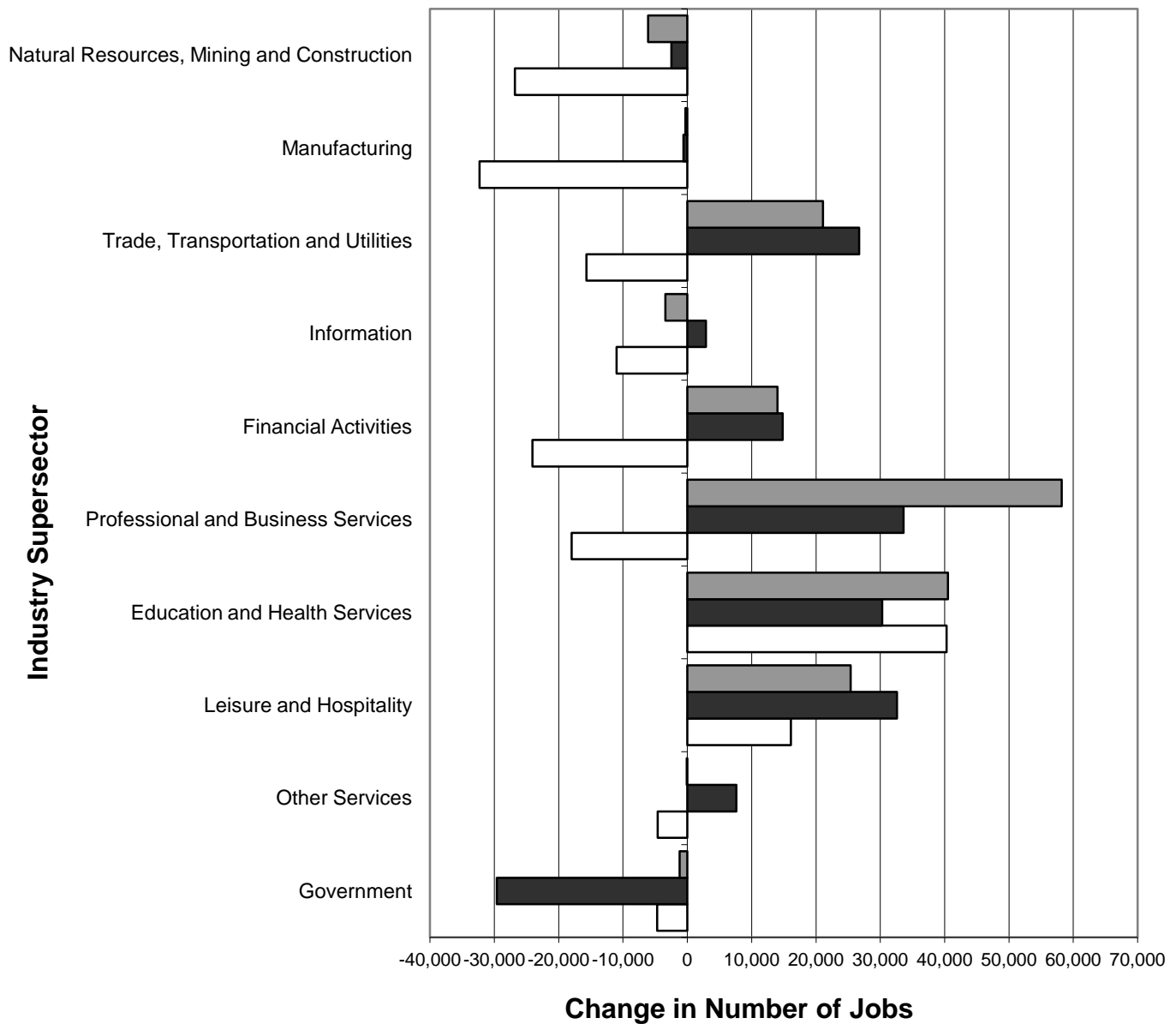
Note: The current private sector jobs series begins in January 1990; thus, over-the-year changes in the series start in January 1991.

**CHART 3: OVER-THE-YEAR CHANGE IN NONFARM JOBS BY SUPERSECTOR**

NEW YORK STATE

(Not Seasonally Adjusted)

MARCH 2009-MARCH 2010, MARCH 2010-MARCH 2011, MARCH 2011-MARCH 2012

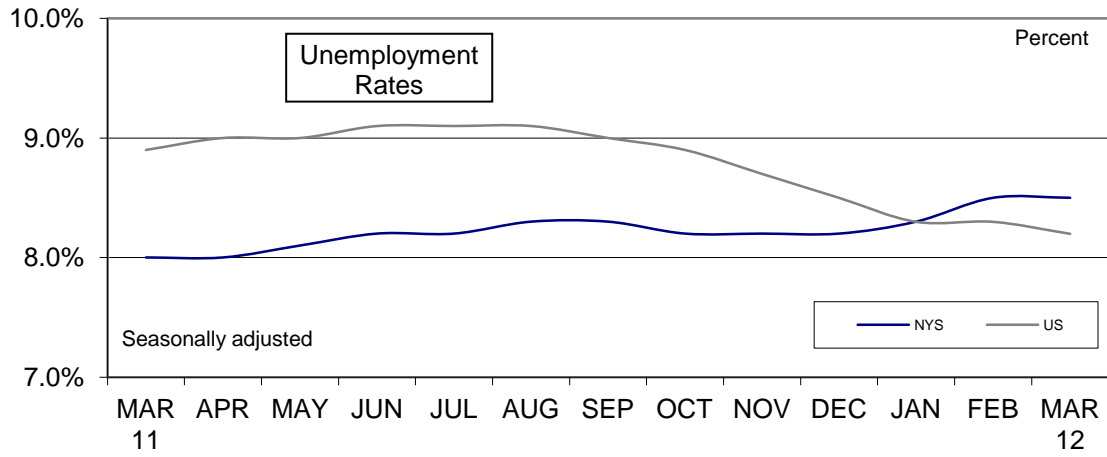


■ MAR 2011-MAR 2012      ■ MAR 2010-MAR 2011      ■ MAR 2009-MAR 2010

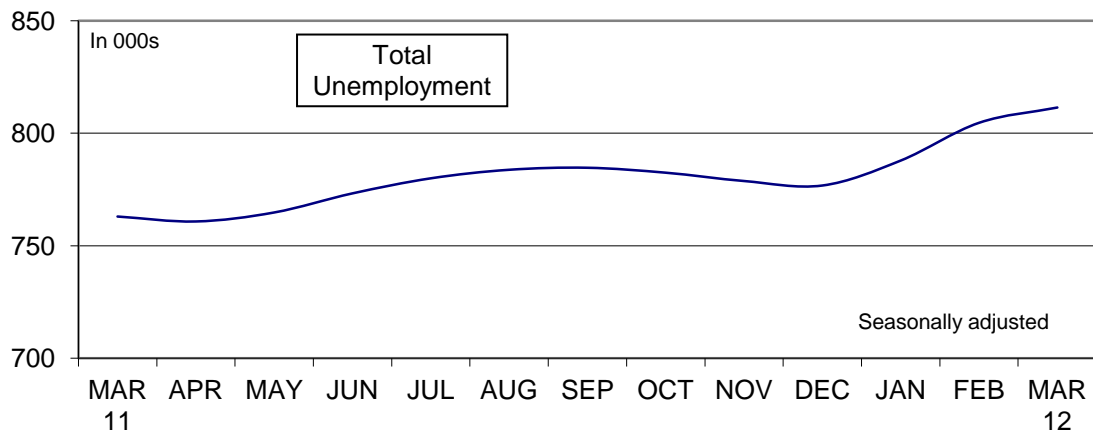
## CHART 4: LABOR FORCE STATISTICS IN MARCH 2012

In March...

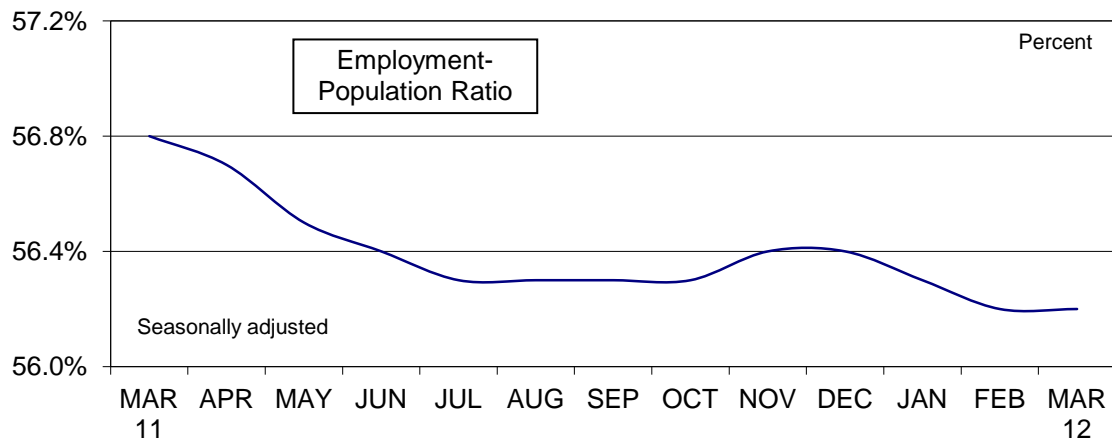
...NYS unemployment rate remained the same



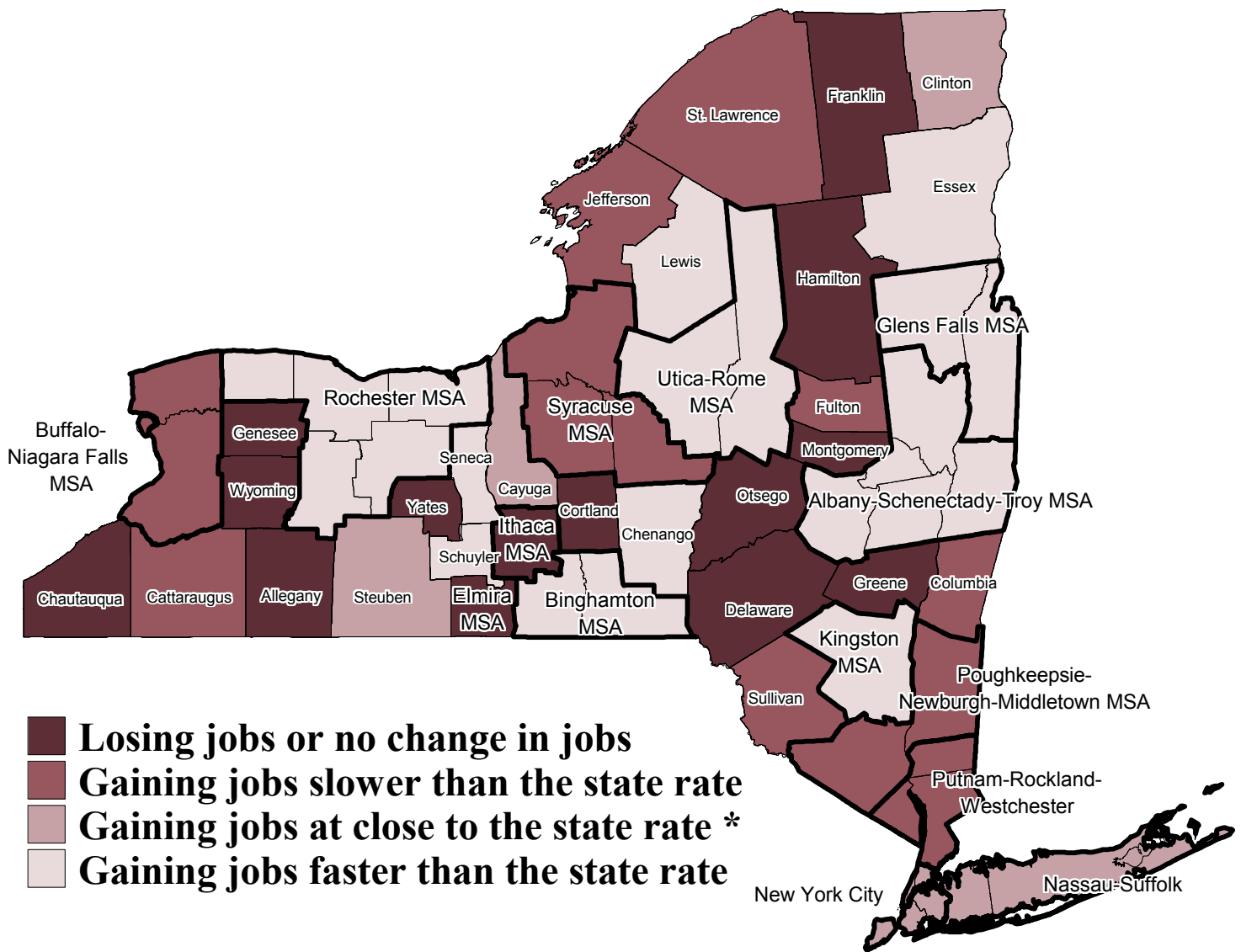
...NYS total unemployment increased



...NYS labor force participation remained the same



# Percent Change in Private Sector Jobs by Area, New York State, March 2011 - March 2012



\* Represents job gain of between 1.9% and 2.3% from March 2011 to March 2012.